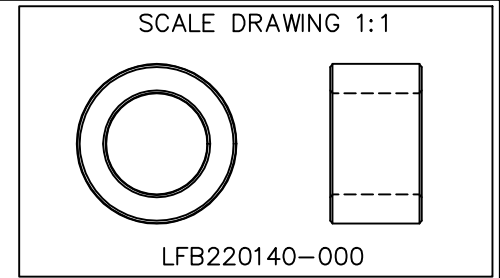


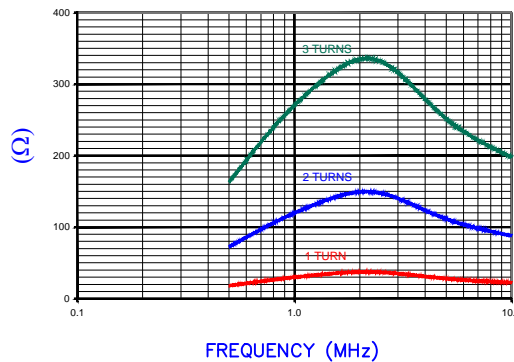
UNCONTROLLED DOCUMENT



SEE DETAIL "A"

SECTION A-A

Z vs. FREQUENCY
1 TURN, 2, AND 3 TURNS
(REF. ONLY)



AGILENT E4991A RF Impedance/Material Analyzer
HP 16092A Test Fixture REF2694

IMPEDANCE (Z) NET SEE NOTE 1

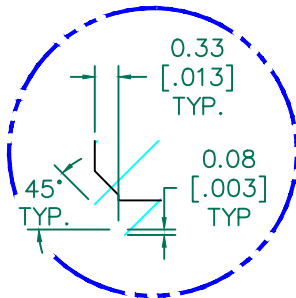
FREQUENCY	500 KHz	1 MHz	5 MHz
NOMINAL (REF.) 1 TURN	18 Ω	30 Ω	28 Ω
MINIMUM (SPEC.) 1 TURN	- Ω	24 Ω	- Ω
NOMINAL (REF.) 2 TURNS	72 Ω	120 Ω	110 Ω
NOMINAL (REF.) 3 TURNS	163 Ω	270 Ω	250 Ω

TEST CRITERIA

METER HP4396A OR EQUIVALENT
FIXTURE HP16092A OR EQUIVALENT

NOTES: UNLESS OTHERWISE SPECIFIED

- NET IMPEDANCE IS IMPEDANCE OF THE FERRITE CORE ONLY. ALL IMPEDANCE CONTRIBUTION FROM TEST WIRE AND FIXTURES HAS BEEN REMOVED.
- COSMETIC SPECIFICATION REFER TO WI-QA-038.



DETAIL "A"
CHAMFER
SCALE=10:1

FERRITE CORE DIMENSIONS (SPEC):

A	22.10 [.870]	±	0.38 [.015]
B	14.00 [.551]	±	0.38 [.015]
C	12.70 [.500]	±	0.25 [.010]

WEIGHT/1000 13.77 kgs [30.36 Lbs]

DIMENSIONS ARE IN mm [INCHES].				This print is the property of Laird Tech. and is loaned in confidence subject to return upon request and with the understanding that no copies shall be made without the written consent of Laird Tech. All rights to design or invention are reserved.				
REV	DESCRIPTION	DATE	INT					
E	UPDATE THE LOGO	06/19/15	QIU	PROJECT/PART NUMBER: LFB220140-000		REV E	PART TYPE: FERRITE CORE	DRAWN BY: TMB
D	UPDATE COMPANY LOGO	07/13/08	TMB	DATE: 10/01/02	SCALE: 3:1	MATERIAL: LF		
C	CHG IMPEDANCE SPEC REMOVE MINIMUM SPEC AT 500KHz&5MHz	02/10/06	JRK	CAD # LFB220140-000-E	TOOL # B0870			
B	REVISE TOLERANCES ADD TEST REF #	12/28/04	JRK					
A	ORIGINAL DRAFT	10/01/02	TMB					
REV	DESCRIPTION	DATE	INT					