

PART NUMBER: 135HC4500K2UM8

Conduction Cooled (High Density Resonant)

Parts are RoHS compliant

ELECTRICAL SPECIFICATIONS

Capacitance: 1.3 μ F

AC Current: 750 A

ESR: 0.5 milliOhms at 100 kHz and 20°C

Self Inductance: 5 Nanohenries maximum

Tolerance: -10 % , +10 %

Temperature Range: -40°C to +85°C

Maximum Core Temperature: 85°C

Resonant Frequency: 170-196 kHz

Maximum power (KVAR): 350

VAC: 500 Volts AC

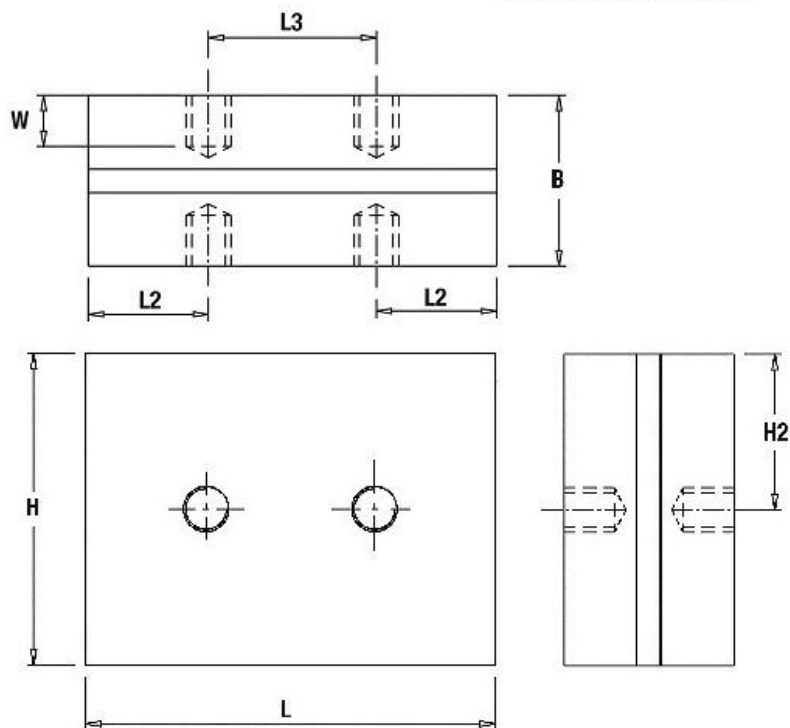
PHYSICAL DIMENSIONS

Length (L): 73 mm, 0.5 mm

Height (H): 55 mm, +/-0.1 mm

Thickness (B): 30.2 mm, +/-0.1 mm

LEAD STYLE: 2UM8



L	H	B	W
73+1	55+1	30.2+0.1	9
Mounting holes: M8 full th			
Tightening torque			